



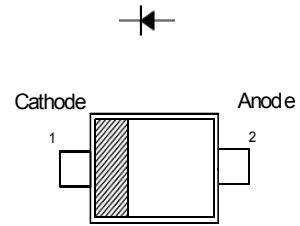
Surface Mount Schottky Barrier Diodes

Features

- Low Forward Voltage

MARKING

SD103AWT:S4 SD103BWT:S5 SD103CWT:S6



SOD-523

Absolute Maximum Ratings ($T_a = 25\text{ }^\circ\text{C}$)

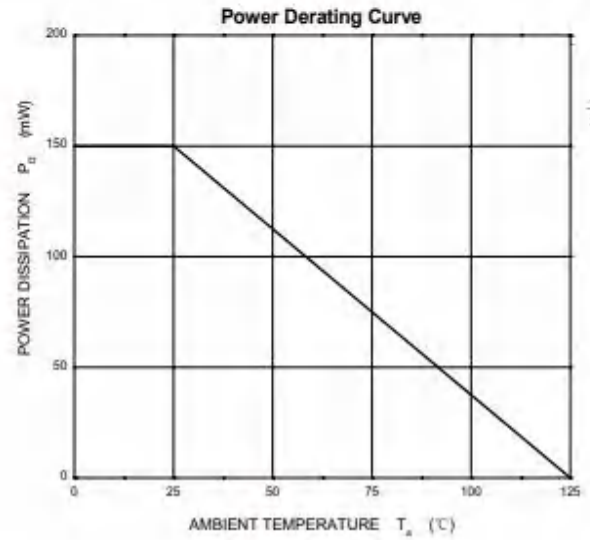
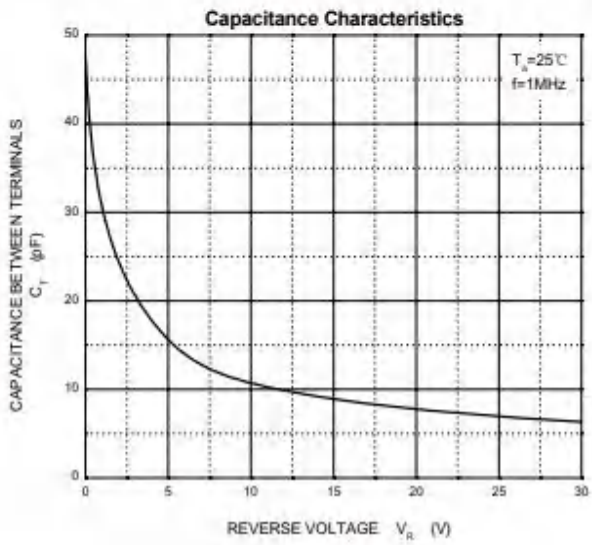
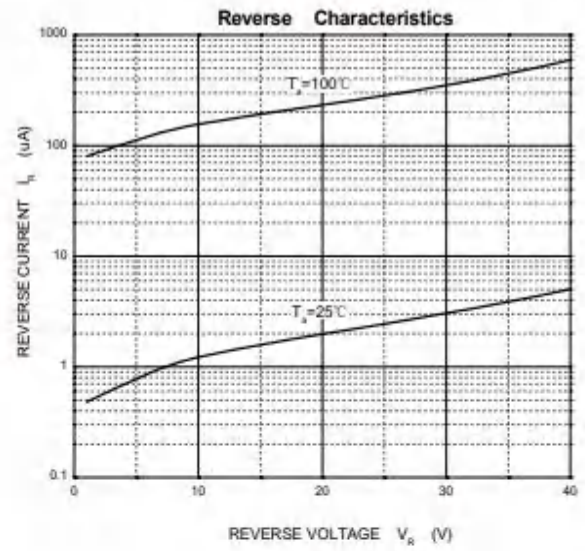
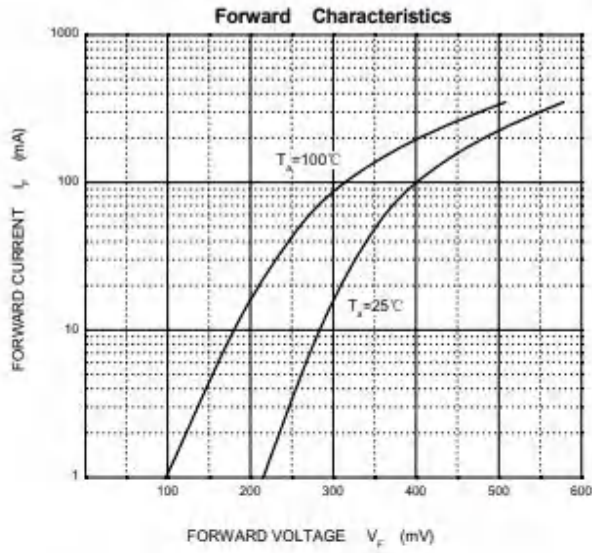
| Parameter | Symbol | Value | Unit | |
|---|----------------|----------------------------------|------------------|----|
| Peak Repetitive Reverse Voltage | V_{RRM} | SD103AWT SD103BWT SD103CWT | 40 30 20 | V |
| Reverse Voltage | | SD103AWT SD103BWT SD103CWT | 40 30 20 | V |
| Average Forward Rectified Current | | $I_{F(AV)}$ | 350 | mA |
| Non-Repetitive Peak Forward Surge Current at $t = 1\text{ s}$ | I_{FSM} | 2 | A | |
| Power Dissipation | P_{tot} | 200 | mW | |
| Operating and Storage Temperature Range | T_j, T_{stg} | - 65 to + 125 | $^\circ\text{C}$ | |

Characteristics at $T_a = 25\text{ }^\circ\text{C}$

| Parameter | Symbol | Min. | Typ. | Max. | Unit | |
|---|-------------|----------------------------------|----------------------------------|-------------|-------------|---------------|
| Reverse Breakdown Voltage at $I_R = 10\text{ }\mu\text{A}$ | $V_{(BR)R}$ | SD103AWT SD103BWT SD103CWT | 40 30 20 | - - - | V | |
| Reverse Leakage Current at $V_R = 30\text{ V}$ at $V_R = 20\text{ V}$ at $V_R = 10\text{ V}$ | | I_R | SD103AWT SD103BWT SD103CWT | - - - | 5 5 5 | μA |
| Forward Voltage at $I_F = 20\text{ mA}$ at $I_F = 200\text{ mA}$ | | | V_F | - - | - - | 0.37 0.6 |
| Total Capacitance at $V_R = 0\text{ V}, f = 1\text{ MHz}$ | C_T | | | - | 50 | - |
| Reverse Recovery Time at $I_F = I_R = 200\text{ mA}, I_{rr} = 0.1 I_R, R_L = 100\text{ }\Omega$ | t_{rr} | - | 10 | - | ns | |



Typical Characteristics

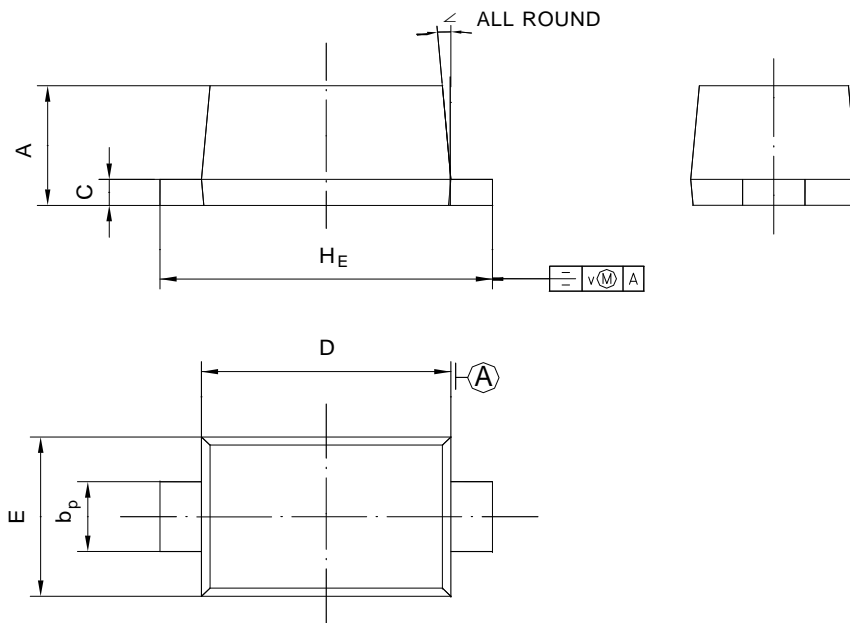




PACKAGE OUTLINE

Plastic surface mounted package; 2 leads

SOD-523



| UNIT | A | b _p | C | D | E | H _E | V | ∠ |
|------|--------------|----------------|----------------|--------------|--------------|----------------|-----|----|
| mm | 0.68 0.58 | 0.4 0.3 | 0.135 0.100 | 1.25 1.15 | 0.85 0.75 | 1.7 1.5 | 0.1 | 5° |